

ECIMF Business Context & eBTWG Business Objects

Andrzej Bialecki
WebGiro, Chief System Architect
<abial@webgiro.com>

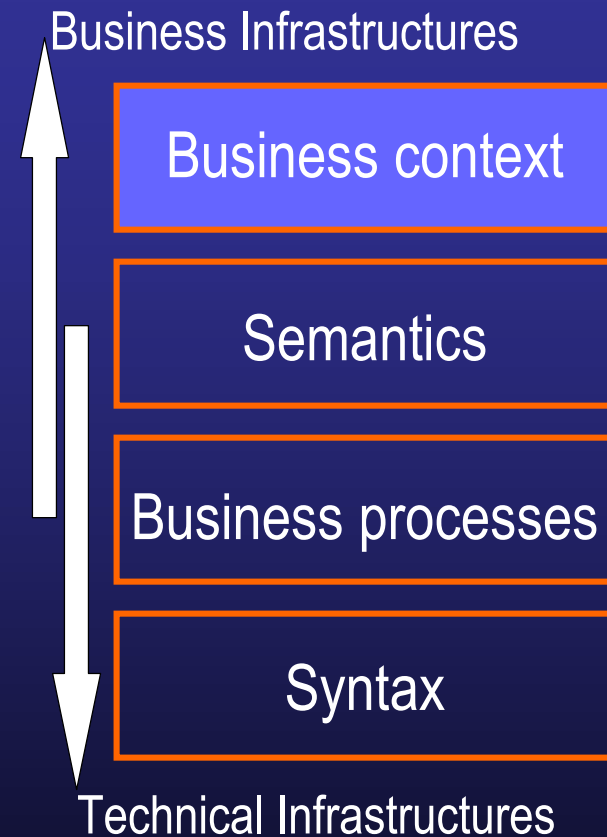
ECIMF meeting, Brussels 2002.02.19

ECIMF – eBTWG coordination

- Informal process (email discussions)
- Started from the common use of REA framework
 - ◆ Initial ECIMF adoption of REA and UMM
 - ◆ ebXML use of UMM Economic Elements (based on simplified REA)

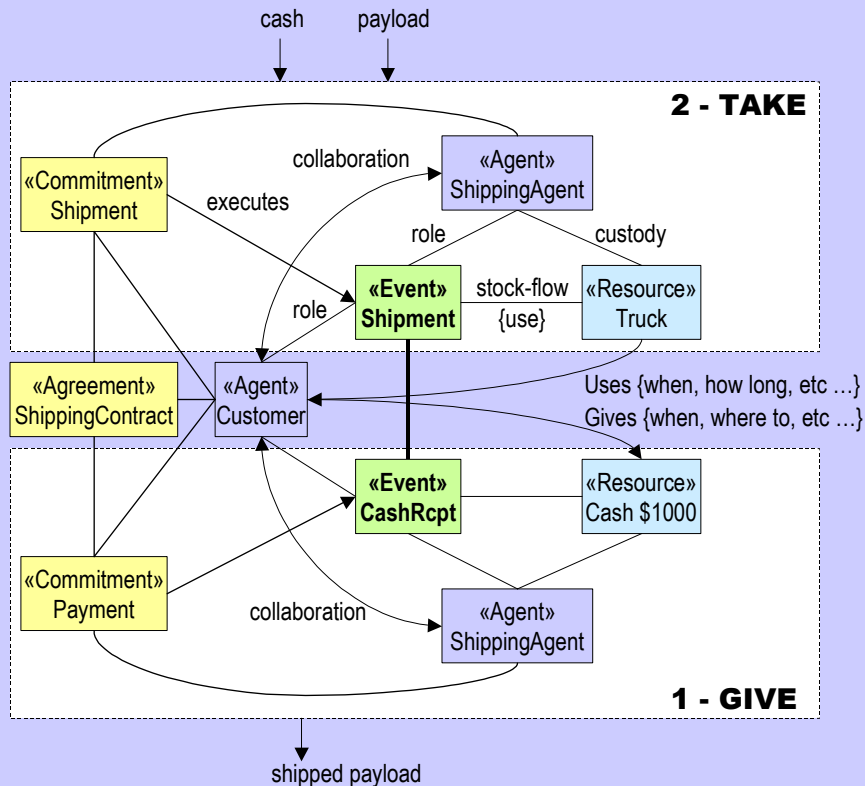
ECIMF Business Context

- ECIMF Interoperability Model
 - ◆ Interop. of technical infrastructures
 - ◆ Interop. of business infrastructures
- ECIMF Business Context
 - ◆ Economic aspects, based on REA
 - ◆ **Resources**: what is traded
 - ◆ **Events**: when and how it happens
 - ◆ **Agents**: who is involved
 - ◆ Agreements & Commitments: legal aspects
 - ◆ Value-chain view of commerce
 - ◆ Chain of business processes
 - ◆ Flow of resources between processes
- Important for interoperability
 - ◆ Economic goals, business rules and legal obligations ultimately define the meaning and consequences of information exchange

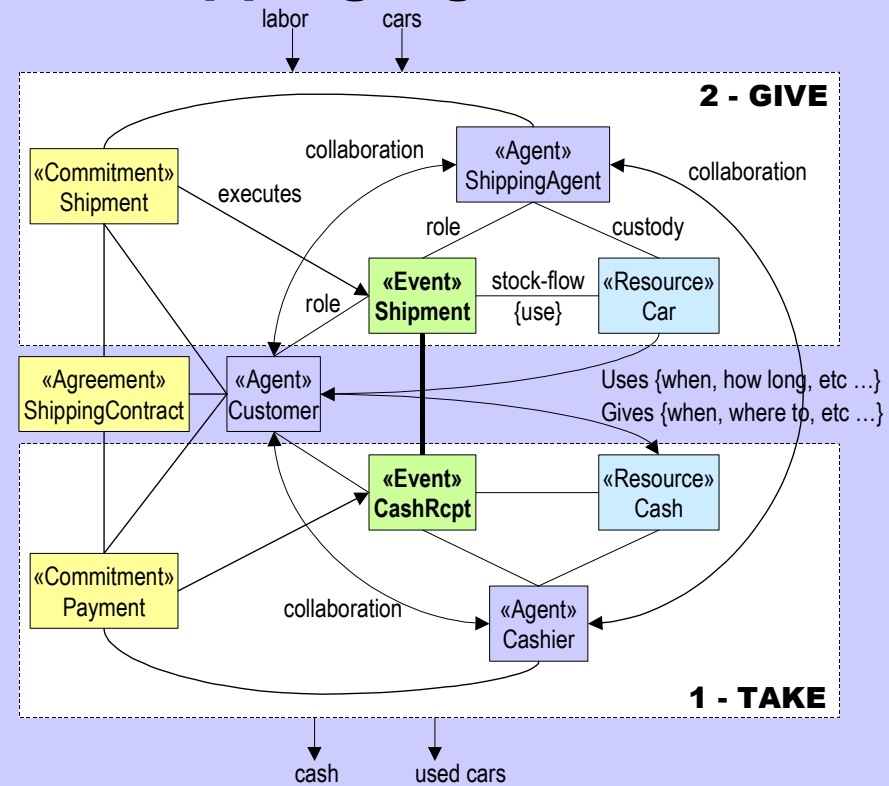


ECIMF Business Context models

Customer's view



Shipping Agent's view

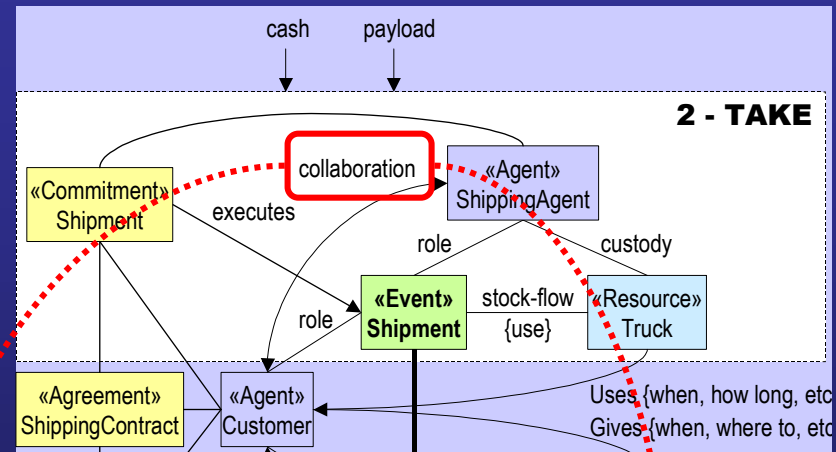


- Example taken from ECIMF-POC
- These two models match* - "let's have a deal!"

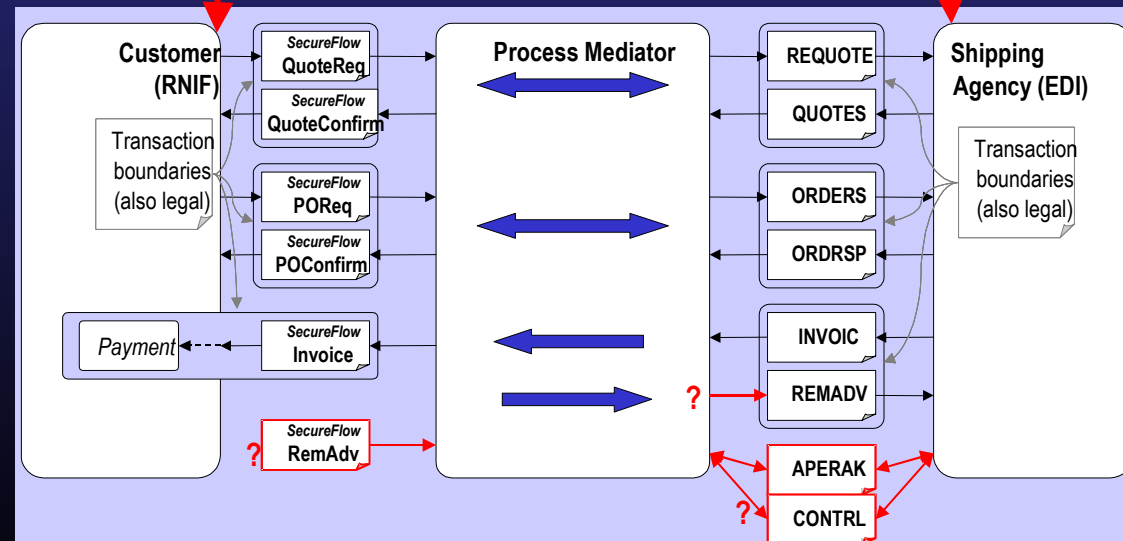
*see ECIMF-GM for definition of matching

Business Context & Business Processes

- Business Context determines the business-related constraints, e.g.:
 - ◆ certain timeouts
 - ◆ rollback or compensation for failed transactions
 - ◆ relationships between several business processes
 - ◆ etc.



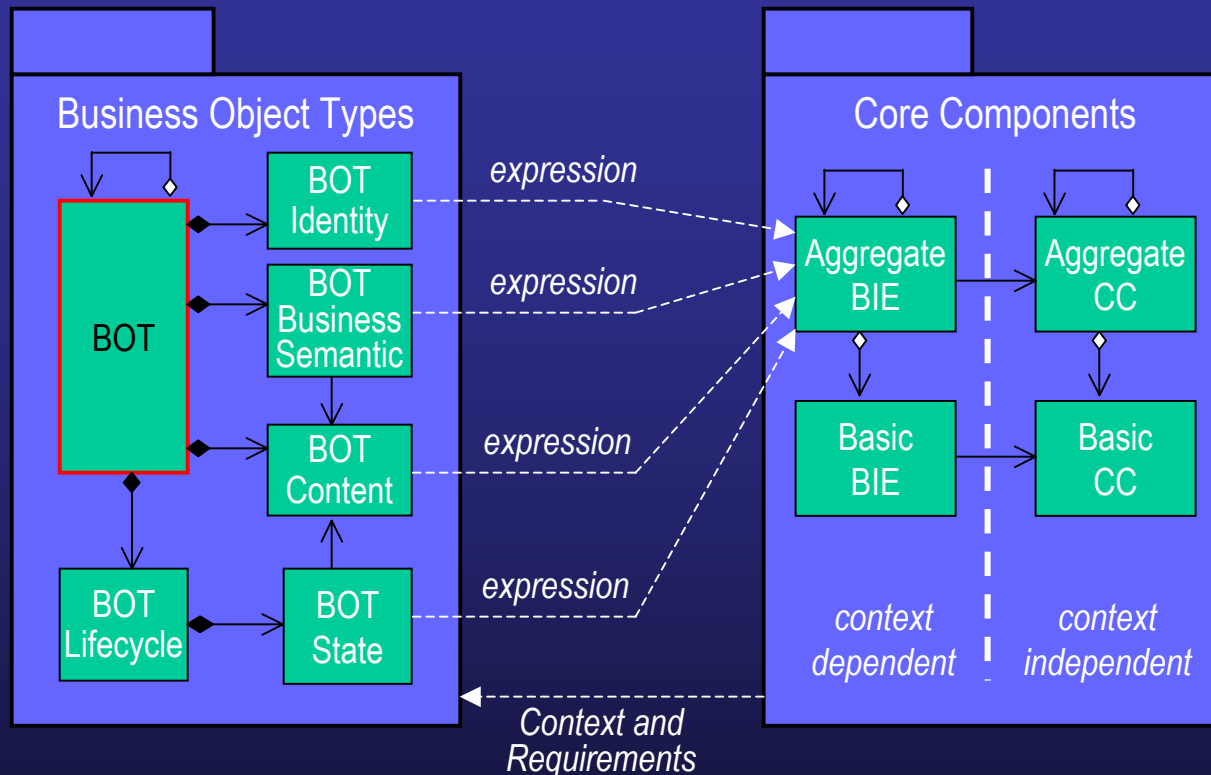
- These constraints cannot (easily/at all) be explained at the technical level



eBTWG: BOTL and BCP/MC work

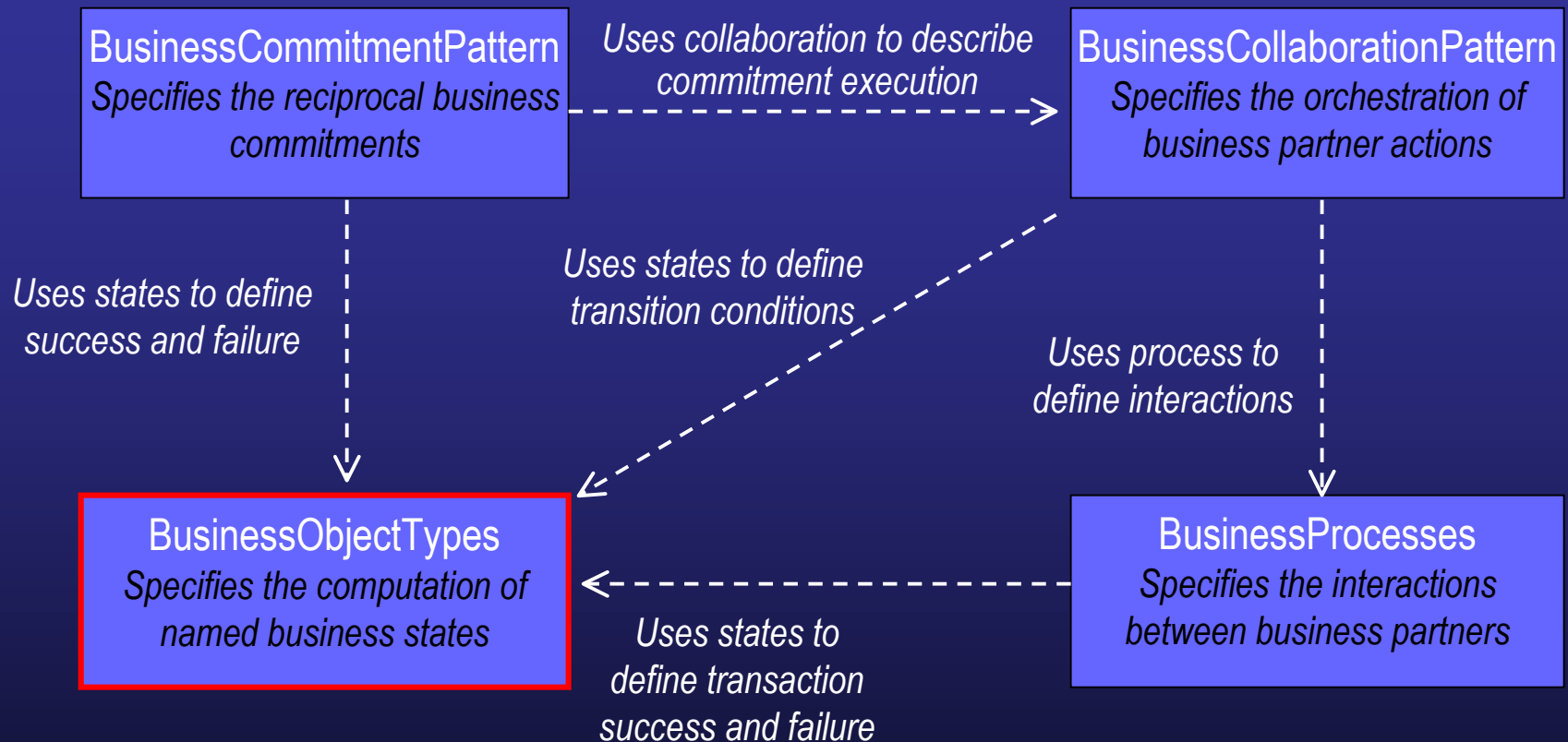
- e-Business Transitionary Working Group
 - ◆ Continuation of ebXML (excluding TRP)
- Business Information Object Types team
- Business Collaboration Patterns and Monitored Commitments team

CC, BIE, ABIE, BOT...



- BOTs consist of:
 - ◆ context-modified CCs
 - ◆ business semantics
 - ◆ state model (and current state)

BOTS, Commitments & Collaborations



- Commitments, collaborations and processes use BOTs:
 - ◆ BOTs help to represent the state of all BIEs processed by each partner, in the appropriate business context

ECIMF Business Context with BOTs

■ Enhanced definition of Business Context:

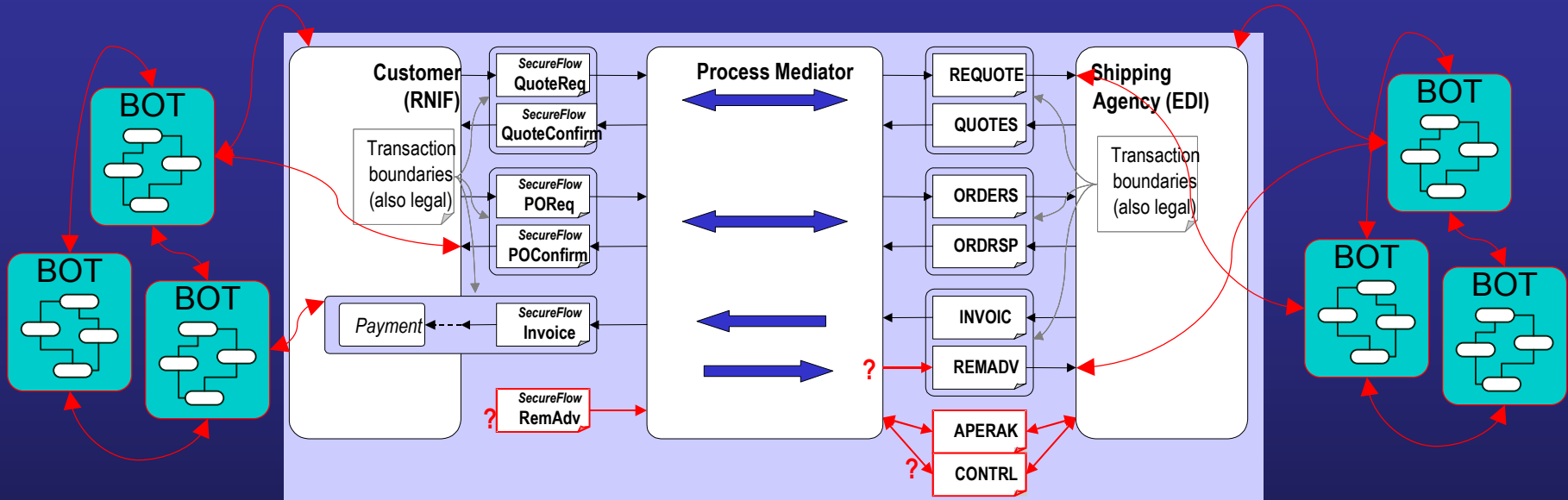
Business Context is a collection of:

- ◆ *Agreements / Contracts containing Commitments*
- ◆ *Collaboration Patterns (using Business Processes) to execute commitments*
- ◆ *Business Objects with their semantics, lifecycle and state, which encapsulate business data and business rules*

■ Advantages over the old definition:

- ◆ Better defined relationship of *Business Context* to *Processes* and *Semantics* layers in the ECIMF model
- ◆ Reflects work of the leading e-commerce standardization initiative
- ◆ Provides clearer implementation guidelines
- ◆ May lead to reducing complexity of the Process Mediation step

BOTs and Process Mediation



- BOTs explain requirements for specific business data
- BOTs allow to follow the state of collaboration
- BOTs explain how to adjust missing/superfluous data between partners, to cause desired state changes
- New Business Context + BOTs provides better indications how to implement process mediators

Summary

- ECIMF Business Context concept ties together eBTWG CCs, BOTs, Collaborations and Commitments - useful for eBTWG
- eBTWG work expands greatly the scope of ECIMF, and explains the crucial connection to the technical layers - useful for ECIMF
- The informal cooperation should continue
 - ◆ Limited by available “free”, voluntary resources...
 - ◆ What about the formal cooperation?

Further information

- ECIMF Project Information Center
 - ◆ <http://www.ecimf.org>
- UN/CEFACT eBTWG
 - ◆ <http://www.ebtwg.org>